



UNIVERSITÉ
MOHAMMED PREMIER

Hajar Asebbane

Age: 24 years

PhD Title:

**Generative Models and Their Applications
in Healthcare**

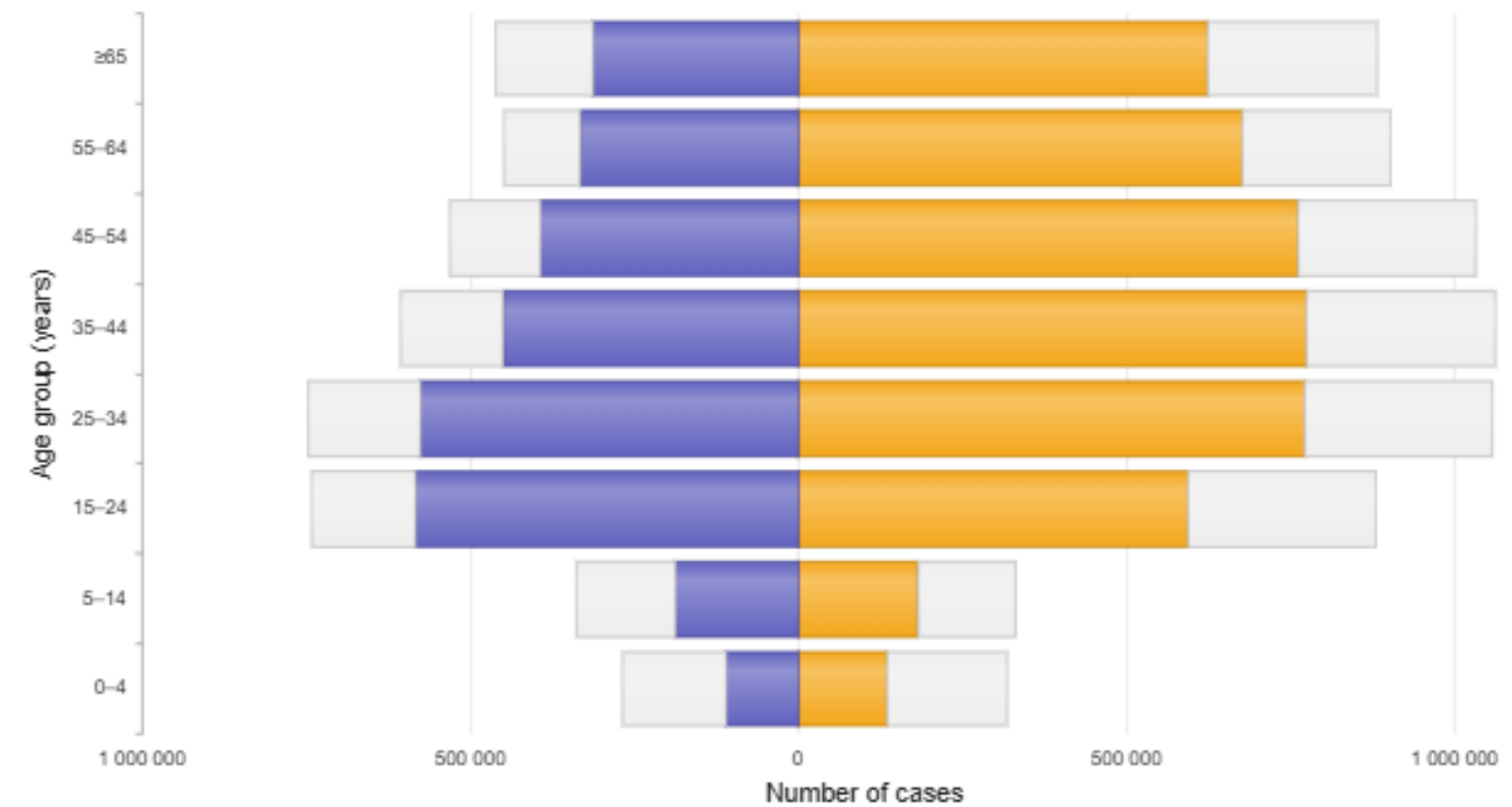
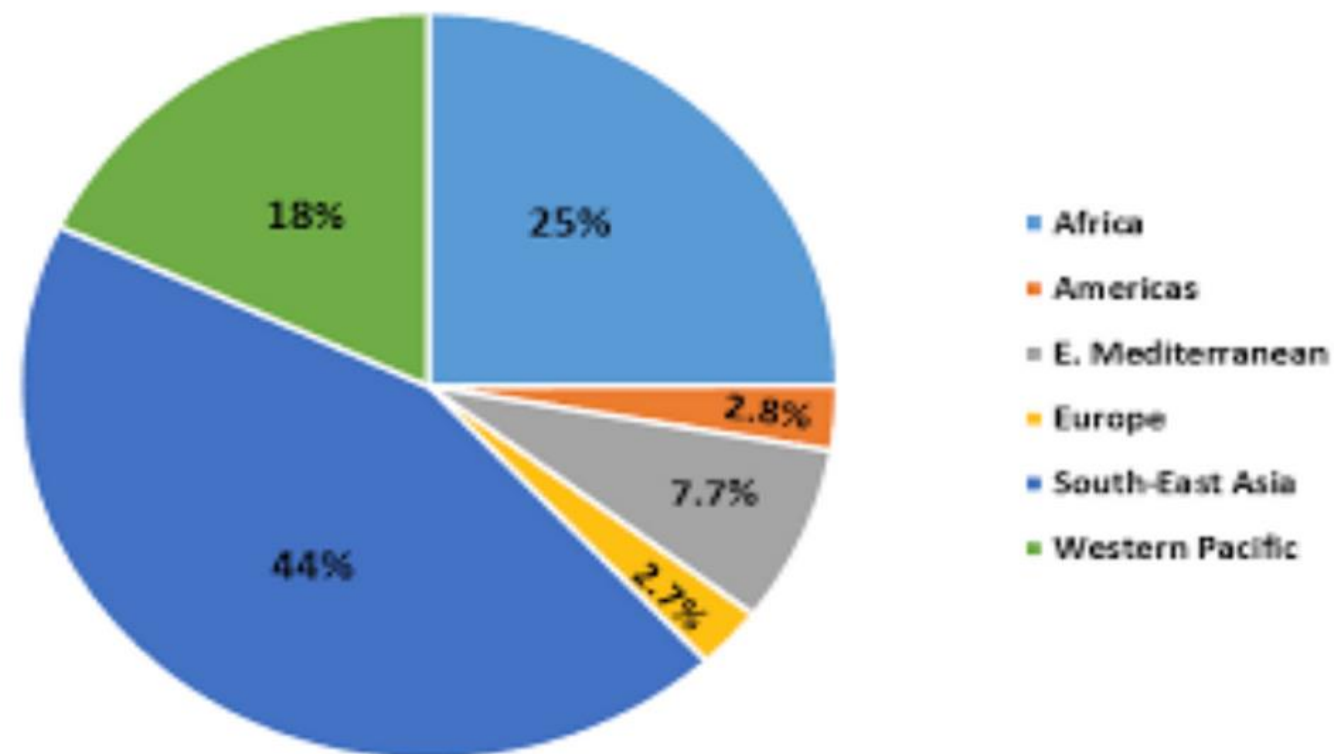
Supervisors:

Pr. Mohammed-Amine Koulali

Pr. Yahya Tayalati

TUBERCULOSIS: A WORLDWIDE HEALTH ISSUE

- 8.6 million new TB cases reported worldwide each year (WHO 2021).
- 1.6 million deaths from TB in 2021.
- Africa is heavily impacted by TB despite available treatments.



AFRO TB DATASET

26

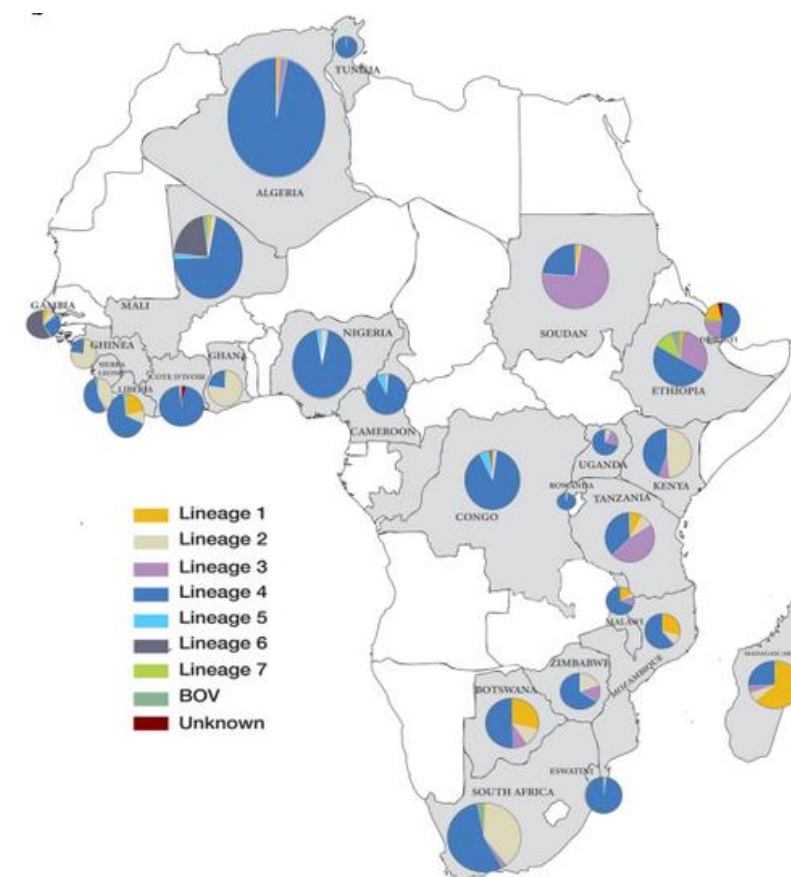
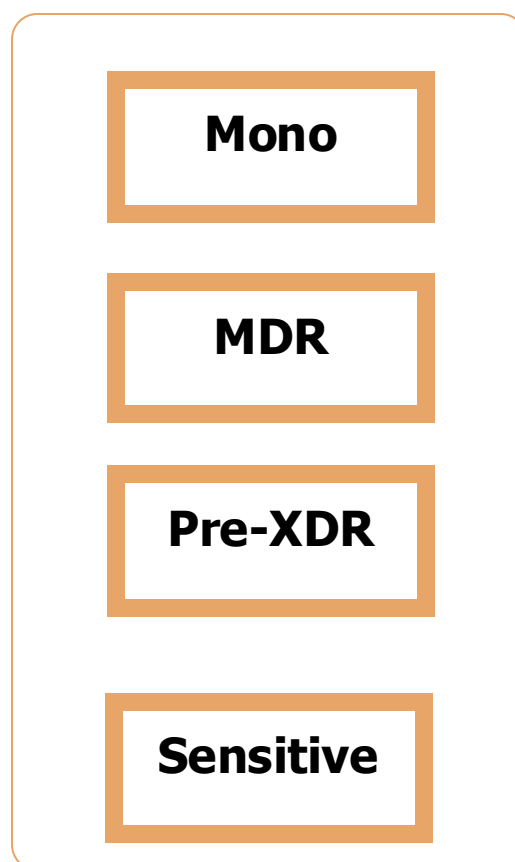
African countries

Drug Resistance

Lineages

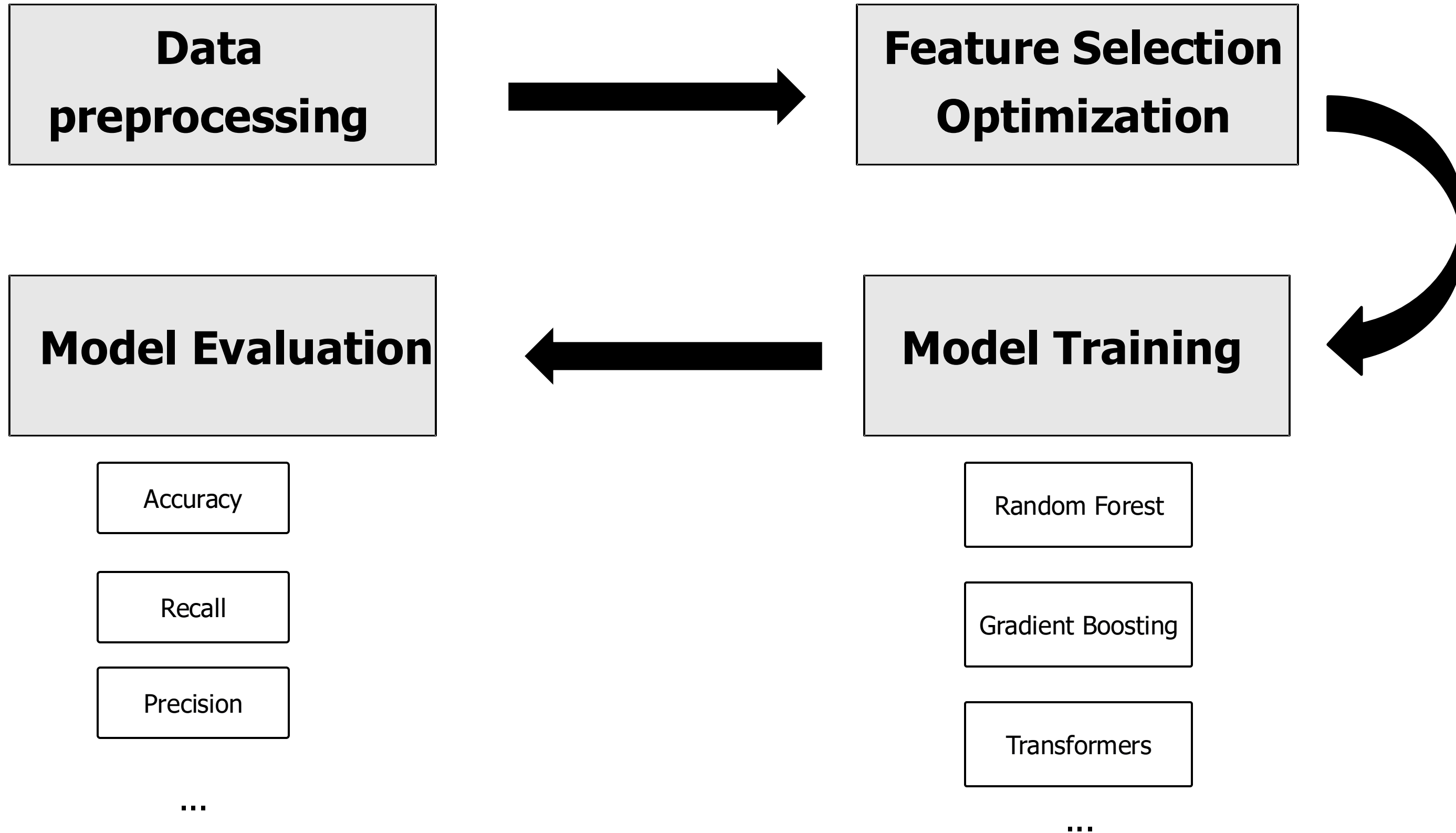
13753
Samples

Country	Number of samples
Algeria	88
Botswana	94
Cameroon	199
Ivory cost	62
Congo	562
Djibouti	180
Eswatini	51
Ethiopia	288
Gambia	465
Ghana	272
Guinea	185
Kenya	40
Liberia	42
Madagascar	163
Malawi	1789
Mali	279
Mozambique	77
Nigeria	141
Rwanda	417
Sierra Leone	134
South Africa	6902
Sudan	158
Tanzania	550
Tunisia	100
Uganda	490
Zimbabwe	25



157
mutations
in 12 genes

AI MODEL DEVELOPMENT PIPELINE



Matrice de confusion

A confusion matrix heatmap with five rows and five columns. The rows are labeled MDR, Mono, Other, Pre-XDR, and Sensitive. The columns are labeled MDR, Mono, Other, Pre-XDR, and Sensitive. The diagonal elements are the highest, with the 'Sensitive' diagonal cell being the darkest blue. The values are: MDR (582, 2, 0, 0, 0), Mono (40, 294, 3, 1, 29), Other (0, 0, 26, 0, 19), Pre-XDR (6, 0, 0, 174, 0), and Sensitive (0, 0, 1, 0, 1574).

MDR	582	2	0	0	0
Mono	40	294	3	1	29
Other	0	0	26	0	19
Pre-XDR	6	0	0	174	0
Sensitive	0	0	1	0	1574
	MDR	Mono	Other	Pre-XDR	Sensitive



Thank you for your attention!

Questions?

